

# Liga de vara IDM 2015



<b>Oil Pattern Distance:</b> 40 Feet	<b>Reverse Brush Drop:</b> 40 Feet	<b>Oil Per Board:</b> 50 uL
<b>Forward Oil Total:</b> 11.6 mL	<b>Reverse Oil Total:</b> 11.05 mL	<b>Volume Oil Total:</b> 22.65 mL
<b>Forward Boards Crossed:</b> 232 Boards	<b>Reverse Boards Crossed:</b> 221 Boards	<b>Total Boards Crossed:</b> 453 Boards

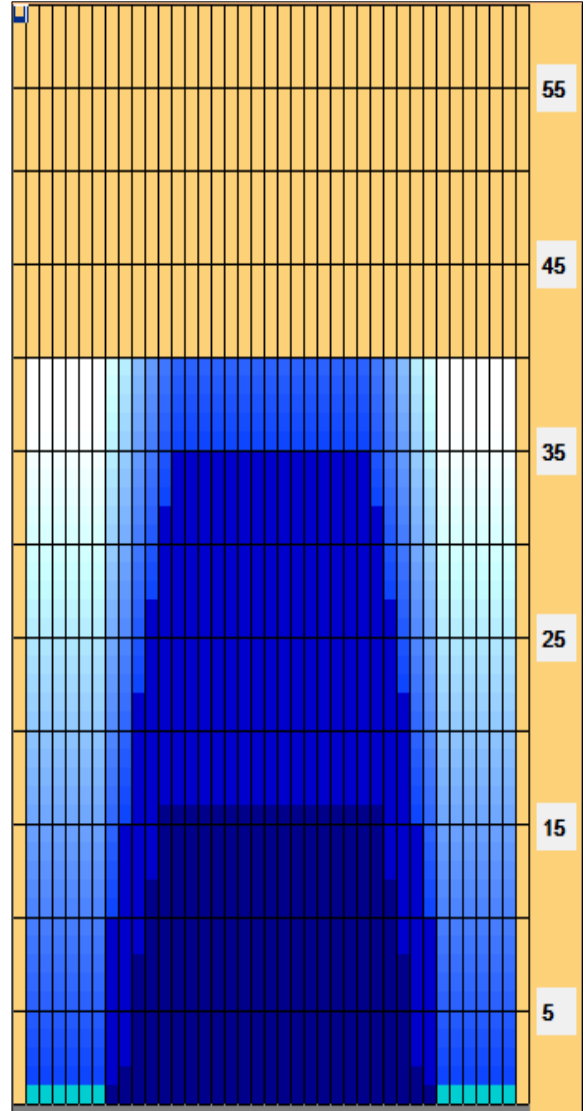
	Start	Stop	Loads	Speed	Crossed	Start	End	Feet	T.Oil
1	2L	2R	2	10	74	0.0	1.4	1.4	3700
2	9L	9R	1	10	23	1.4	2.8	1.4	1150
3	10L	10R	3	14	63	2.8	8.7	5.9	3150
4	11L	11R	2	14	38	8.7	12.6	3.9	1900
5	12L	12R	2	14	34	12.6	16.5	3.9	1700
6	2L	2R	0	18	0	16.5	34.0	17.5	0
7	2L	2R	0	26	0	34.0	38.0	4.0	0
8	2L	2R	0	30	0	38.0	40.0	2.0	0

Conditioner:  
Type In or Select One

TransferType:  
Type In or Select One

Forward  
Reverse  
Combined  
Buff

	Start	Stop	Loads	Speed	Crossed	Start	End	Feet	T.Oil
1	2L	2R	0	30	0	40.0	35.0	-5.0	0
2	13L	13R	1	18	15	35.0	32.5	-2.5	750
3	12L	12R	2	18	34	32.5	27.4	-5.1	1700
4	11L	11R	2	18	38	27.4	22.3	-5.1	1900
5	10L	10R	3	18	63	22.3	14.7	-7.6	3150
6	9L	9R	2	18	46	14.7	9.6	-5.1	2300
7	8L	8R	1	14	25	9.6	7.7	-1.9	1250
8	2L	2R	0	10	0	7.7	0.0	-7.7	0



Item	3L-7L:18L-18R	8L-12L:18L-18R	13L-17L:18L-18R	18L-18R:17R-13R	18L-18R:12R-8R	18L-18R:7R-3R
Description	Outside Track:Middle	Middle Track:Middle	Inside Track:Middle	Middle: Inside Track	Middle:Middle Track	Middle:Outside Track
Track Zone Ratio	10.5	1.84	1	1	1.84	10.5

